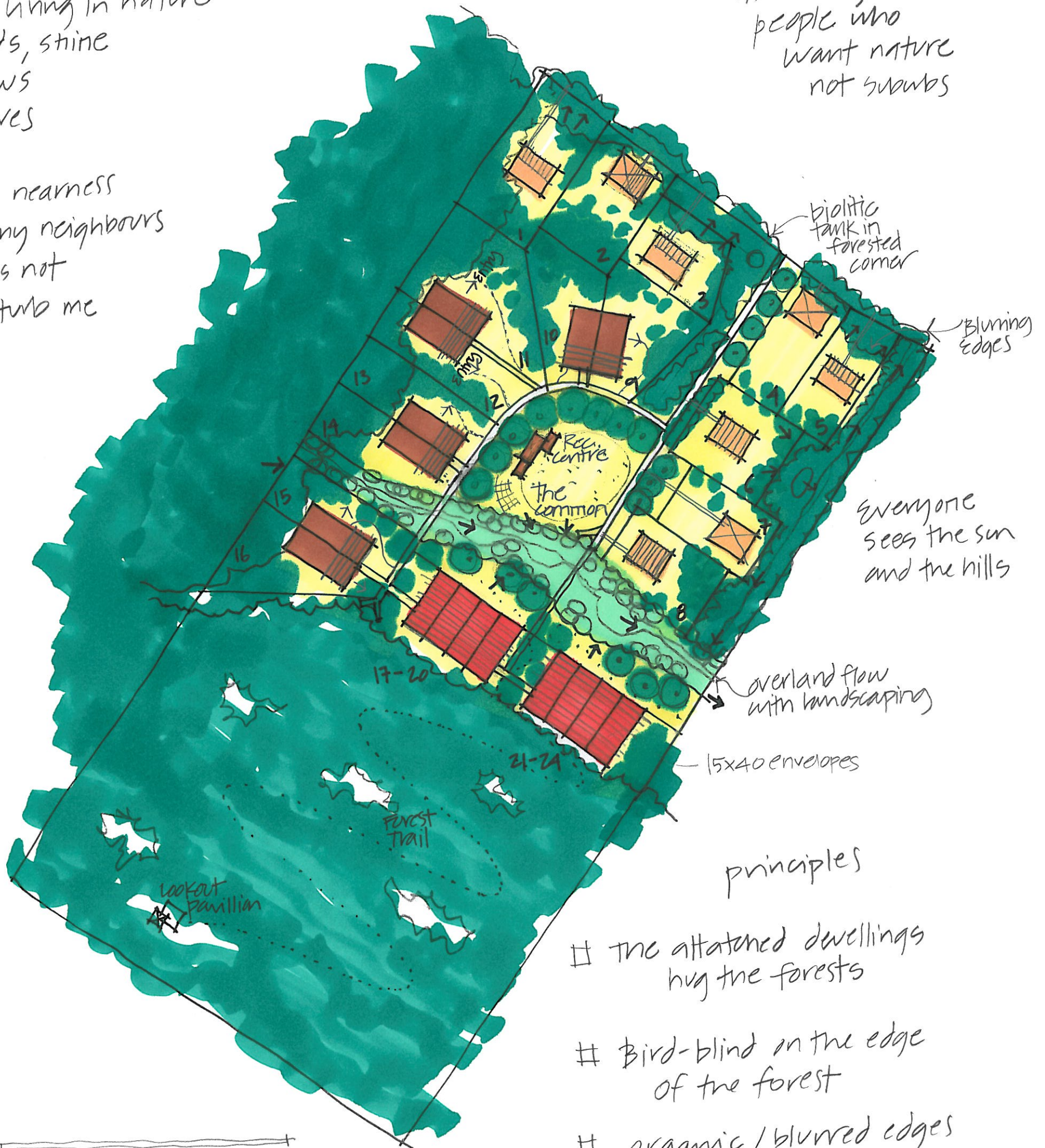


I'm living in nature
birds, stone
views
leaves

the nearness
of my neighbours
does not
disturb me

attracting
people who
want nature
not suburbs



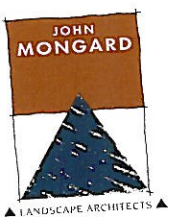
Everyone
sees the sun
and the hills

principles

- # The attached dwellings hug the forests
- # Bird-blind on the edge of the forest
- # organic / blurred edges to all sides
- # woody buildings



VILLAGE IN THE
WOODLANDS



Concept 4

1:2500

27.11.2010

JM + CD

89 Grey Street, South Brisbane,
Queensland, Australia 4101
Phone +61 7 3844 1932
Fax +61 7 3844 3250

2500 - 3500 m ²	8	conventional lot single home	with boat/shed in envelope	20x20 envelope
3000 - 4000 m ²	8	queenslander Dual Homes	with boat & caravan parks shedspace in building	15x40 envelope
600 m ² envelope	8	Hillside Timber Terraces	with parking under	15x40 envelope
	24	Total lots/dwellings		